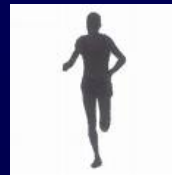


Ma & Pa Community Greenway Feasibility Study

*Yoe Borough
Community Focus Group
June 22, 2009*

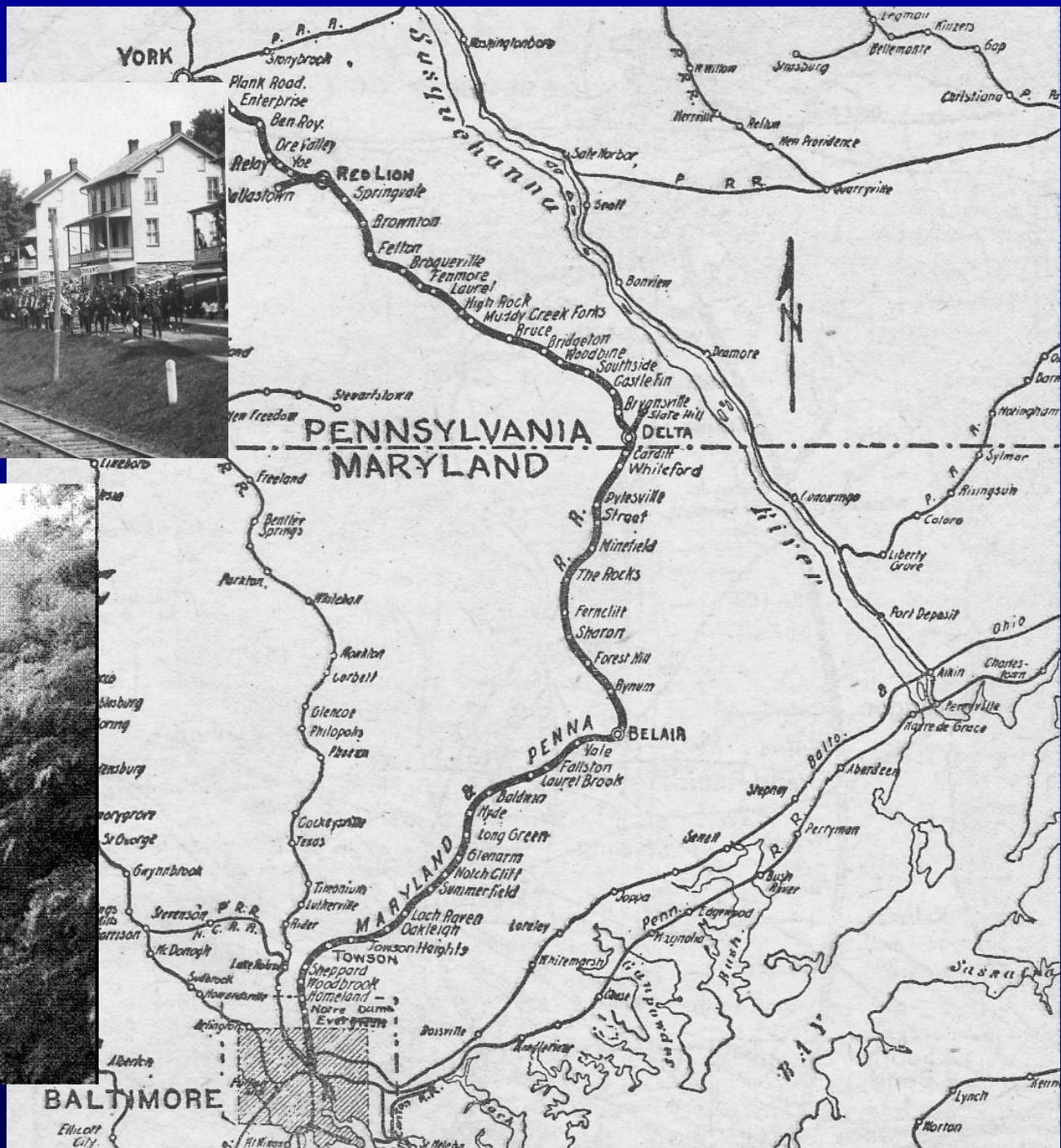
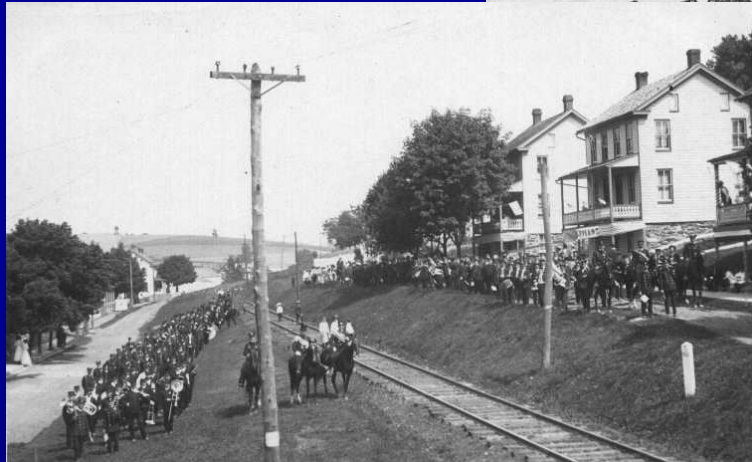


Feasibility Study Process

- Public participation
- Corridor analysis
 - Physical
 - Legal
 - Financial
- Concept plan
- Cost analysis
- Operations and maintenance analysis

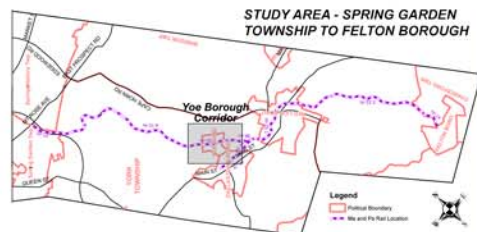
Public Participation

- Study Committee
- Information Dissemination
- Community and Municipal Surveys
- Key Person Interviews
- Community Focus Group Meetings
- Public Meetings
- Open House



Ma & Pa Community Greenway Feasibility Study

Yoe Borough Corridor



THROUGH RESIDENTIAL YARDS

0.15 MILE
EARTHEN
CORRIDOR,
3' CL, 8'W

0.5 MILE SECTION THROUGH YOE BOROUGH

MATCH

BUILDINGS ADJACENT
TO CORRIDOR
STRUCTURALLY
UN SOUND

YOE
BOROUGH

WATER ST

PENNSYLVANIA AVE

BROAD STREET

LIMITED SITE
DISTANCE
AND BUSY
INTERSECTION

GEORGE ST

WATER ST

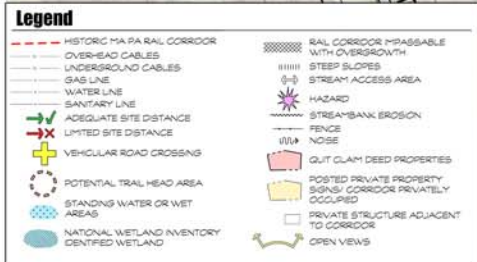
MAIN ST

YOE PARK

YOE PARK

YOE
BOROUGH

MATCH



SCALE IN MILES

0

0.25

0.5



Who Uses the Trail?



- 60.8% York County residents
- 25.7% MD/DC/VA area residents
- 3.6% Lancaster County
- 2.2% Harrisburg area



- 80% of users are over the age of 35
- 38% of users are between 36 – 55 years of age





- 71.7% - cyclists



- 18.0% - walkers



- 5.3% - joggers/runners



- 0.8% - equestrians

When is the Trail Used?

- 56.1% - weekends
- 43.95 – weekdays
- 40.7% mornings
- 30.7% afternoons
- 12.9% evenings
- 56% use once a week



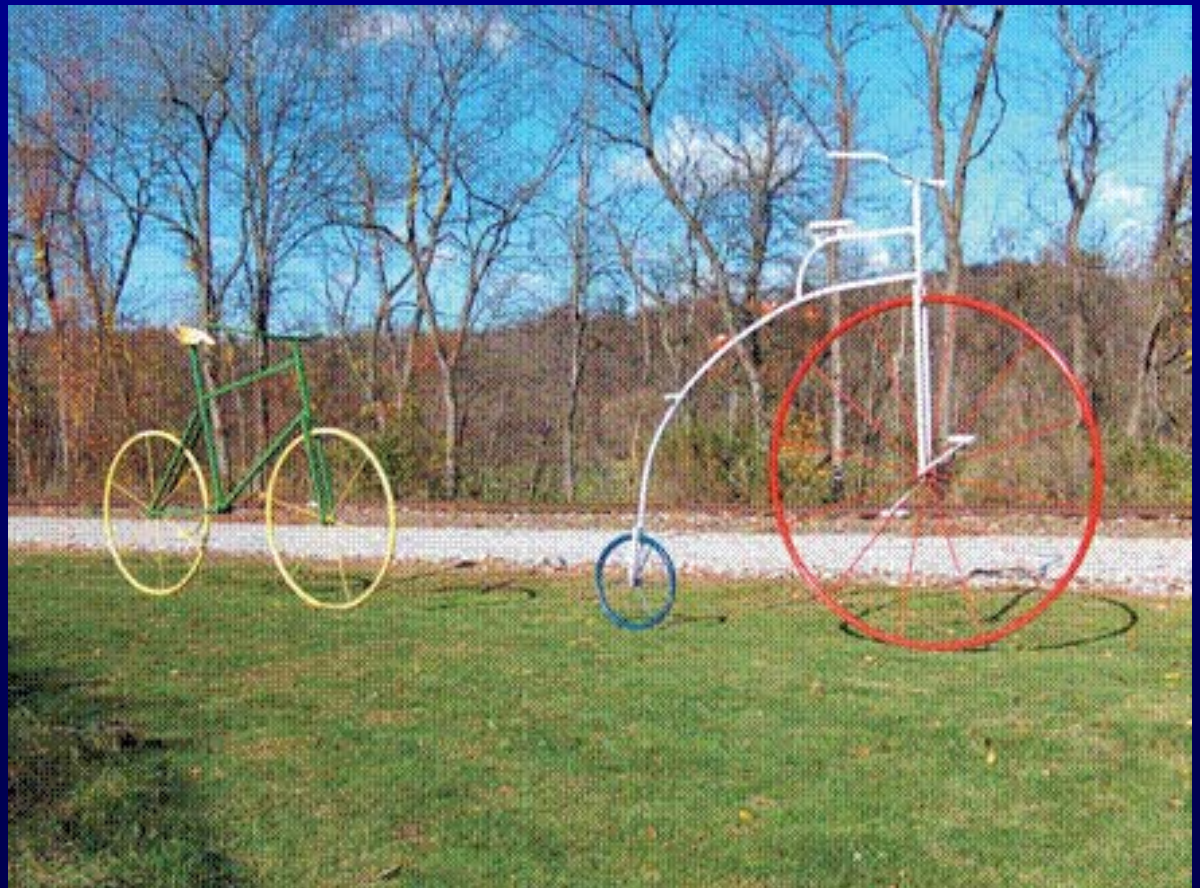
Reasons for Using the Trail

- 44.8% - health and exercise
- 38.2% - recreational
- 10.0% - fitness and training
- 1.2% - commuting



Cleanliness

- 93.6% rated trail cleanliness as excellent or good



Safety and Security

- 91.6% rate safety and security of trail as excellent or good



Economic Impact

- 85% purchased hard goods (bikes and bike accessories) in conjunction with use of the trail
- Average spending on hard goods - \$367



- 72% purchased soft goods (water, soda, candy) in conjunction with use of the trail
- Average expenditure per person per trip on soft goods – \$12.66

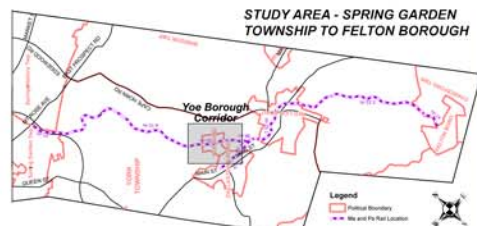




- Total economic impact in 2007 - \$6 million

Ma & Pa Community Greenway Feasibility Study

Yoe Borough Corridor



THROUGH RESIDENTIAL YARDS

0.15 MILE
EARTHEN
CORRIDOR,
3' CL, 8'W

0.5 MILE SECTION THROUGH YOE BOROUGH

MATCH

BUILDINGS ADJACENT
TO CORRIDOR
STRUCTURALLY
UN SOUND

YOE
BOROUGH

WATER ST

PENNSYLVANIA AVE

BROAD STREET

LIMITED SITE
DISTANCE
AND BUSY
INTERSECTION

GEORGE ST

WATER ST

MAIN ST

YOE PARK

YOE PARK

YOE
BOROUGH

MATCH

Legend

<ul style="list-style-type: none"> HISTORIC MA PA RAIL CORRIDOR OVERHEAD CABLES UNDERGROUND CABLES GAS LINE WATER LINE SANITARY LINE ADEQUATE SITE DISTANCE LIMITED SITE DISTANCE VEHICULAR ROAD CROSSING POTENTIAL TRAIL HEAD AREA STANDING WATER OR WET AREAS NATIONAL WETLAND INVENTORY DESIGNATED WETLAND 	<ul style="list-style-type: none"> RAIL CORRIDOR IMPASSABLE WITH OVERGROWTH STEEP SLOPES STREAM ACCESS AREA HAZARD STREAM-BANK EROSION FENCE NOISE QUIT CLAIM DEED PROPERTIES POSTED PRIVATE PROPERTY SIGN/ CORRIDOR PRIVATELY OCCUPIED PRIVATE STRUCTURE ADJACENT TO CORRIDOR OPEN VIEWS
--	--

SCALE IN MILES

0 0.25 0.5

